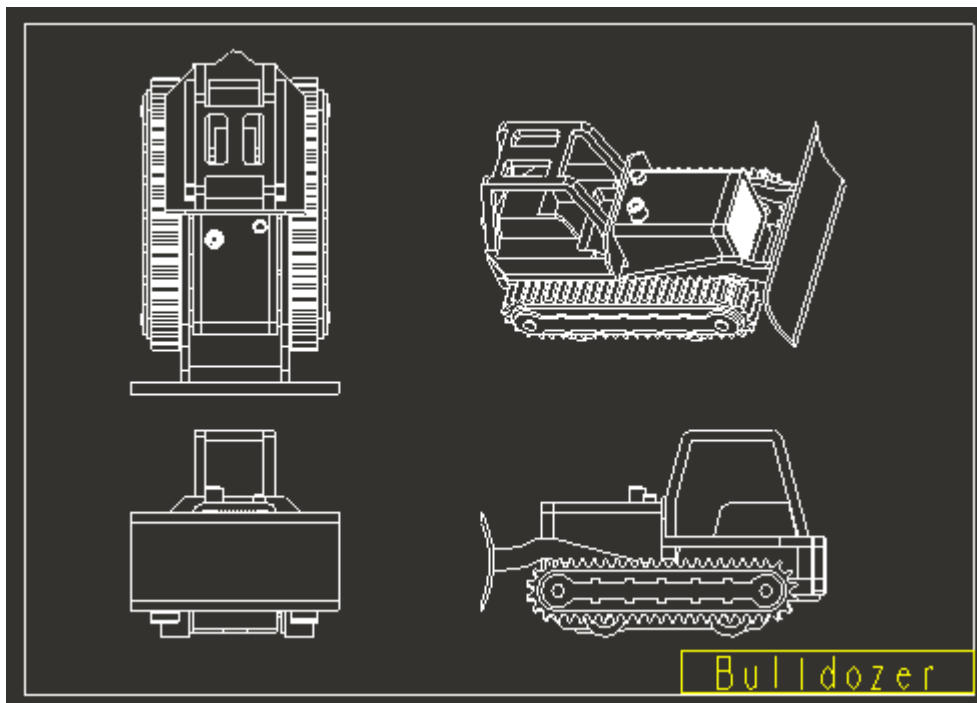


## Technique for changing Drawing Size Format w.o rescaling the Drawing

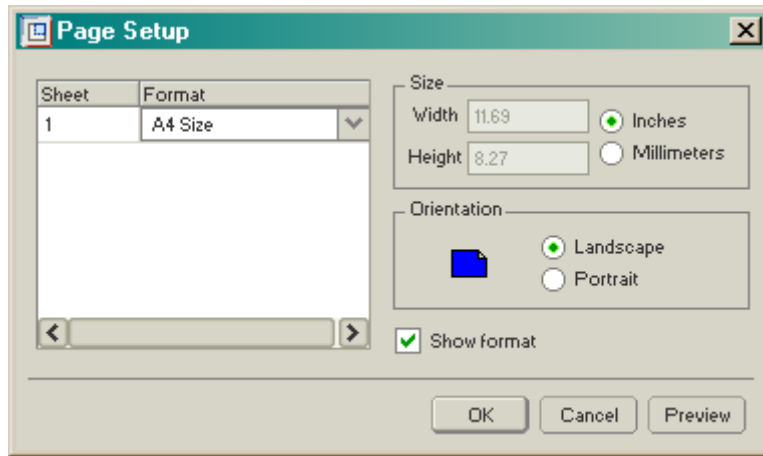
It is possible to change the size of a format while retaining the size of drawing views and draft items without rescaling. The config.pro option, "variant\_drawing\_item\_sizes", must be set to "no" in order for the functionality to take effect.

### Procedure

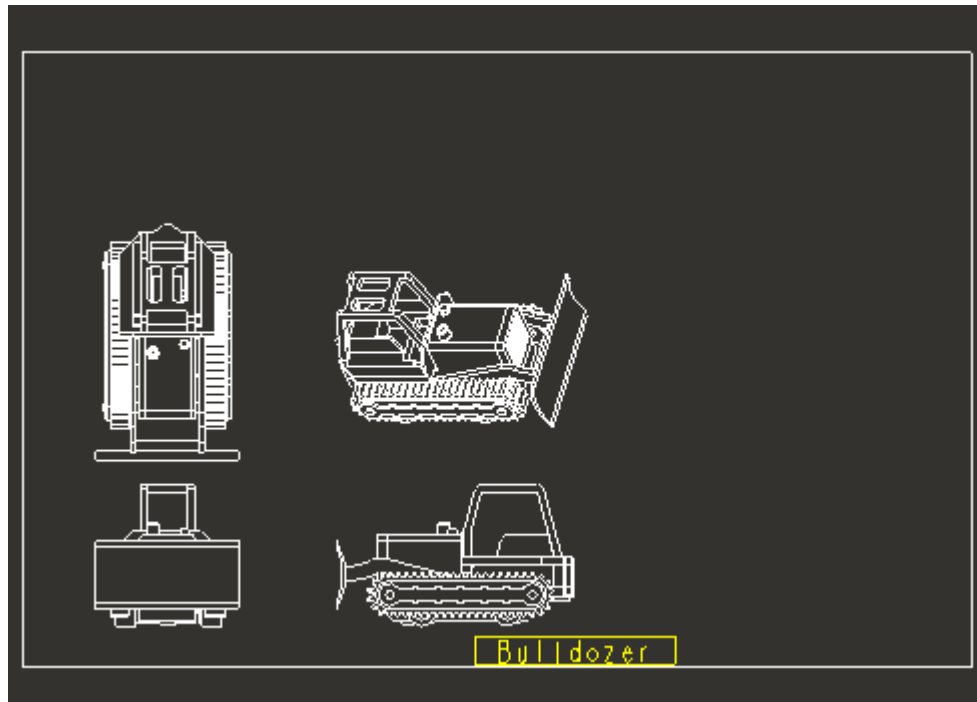
Click **#File > #Open** to retrieve an existing drawing into memory, and choose the name of the drawing to have the format size changed. Figure 1 shows an A size drawing that has been retrieved into session.



To change the size of the format on the drawing, click **#File > #Page Setup** to open the 'Page Setup' dialogue box. Use the drop-down list to the right of each sheet number to assign a format style. To set a custom size, use the 'Variable' setting in the list box. To load a format not listed, use the 'Browse' setting. To show or hide the format for a specific page, use the 'Show Format' checkbox. Figure 2 shows the 'Page Setup' dialogue box.



If any tables are associated with the format, the prompt "Remove this table? ((Y)es, (N)o, (K)eeP all, (R)emove all)? [N]" will appear. Accept the default to keep the tables on the drawing from being removed. Figure 3 shows the drawing after it has been replaced by a B size format with the new functionality.



On the new format size, the drawing views and draft items will remain the same size and at the same absolute coordinates. For the drawing and draft items to automatically rescale when changing format size, modify the config.pro option "variant\_drawing\_item\_sizes" to "yes". Figure 4 shows the drawing after it has been replaced by a B size format with this functionality.

**Note:** Modifying the format size will modify the drawing in either scenario, and it will therefore need to be resubmitted to Pro/INTRALINK.

