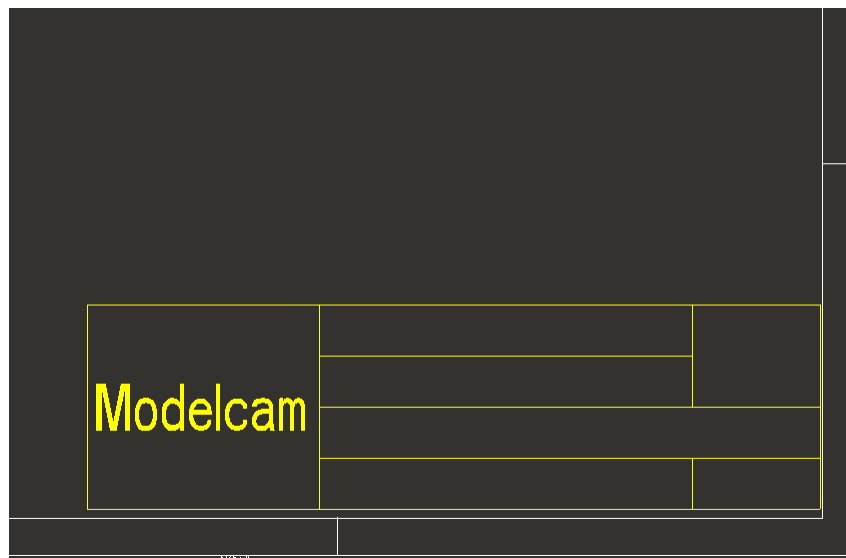


Technique for using Parameters in Formats

There are two types of parameters which can be used on a format, user defined parameters and those supplied by Pro/ENGINEER. Each parameter has certain unique characteristics which allows it to be used in different ways when placed on a format.

Procedure

Create a title block similar to the one shown in Figure 1 in Format mode. The table can be created using standard **Table** functionality.



There are two different types of parameters that can be used in a format: Pro/ENGINEER parameters and user defined parameters. Pro/ENGINEER parameters include "&model_name", "¤t_sheet", "&total_sheets", "&scale", "&type", "&dwg_name" and "&today's_date".

Pro/ENGINEER parameters, with the exception of "&today's_date", can be placed on a format as text in a **Table** cell or as a note. When the format is added to a drawing, these parameters will update with the appropriate value. For example, "&dwg_name" will update with the name of the drawing file, "¤t_sheet" will update with the number of the current sheet of the drawing. Since the Pro/ENGINEER parameters "&model_name", "&scale", and "&type" all need to reference a model in order to update with the correct information, it is good practice to add the model to a drawing before a format is added.

The format of the parameter "&today's_date" can be controlled by the configuration option "today's_date_note_format". The option consists of three

parts: the month, day, and year. You can enter the portions in any order. The default value is %dd-%Mmm-%yy .

The valid formats for the year portion are:

`%yy, 97`

`%yyyy, 1997`

The valid formats for the month portion are:

`%Mmm, Jan`

`%MMM, JAN`

`%Month, January`

`%Month, JANUARY`

`%mm, 01`

`%m, 1`

`% m,<space>1`

The valid formats for the date portion are:

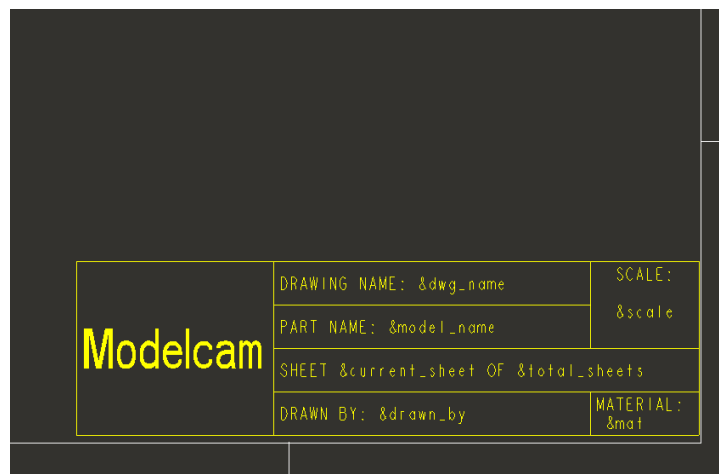
`%dd, 01`

`%d, 1`

`% d,<space>1`

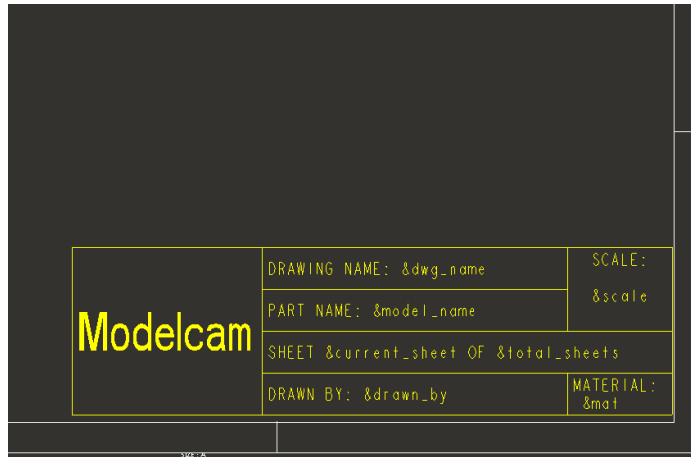
For example, "`%dd %mm %yy`" will appear as "01 01 97" and "`%mm/%dd/%yy`" would appear as "01/01/97". The default is "`%dd-%Mmm-%yy`" and would appear as "01-Jan-97"

Add the Pro/ENGINEER parameters similar to those shown in Figure 2 to the format table.

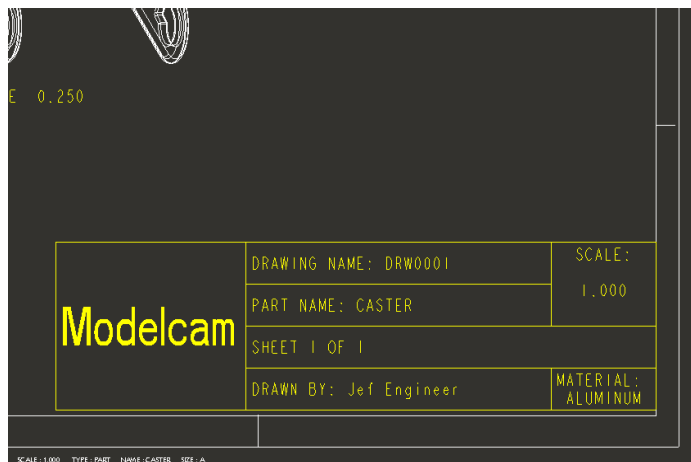


Modelcam	DRAWING NAME: &dwg_name	SCALE:
	PART NAME: &model_name	&scale
	SHEET ¤t_sheet OF &total_sheets	
	DRAWN BY: &drawn_by	MATERIAL: &mat

Figure 3 illustrates how this table would look if the format were added to the drawing both before and after a view of the model. Figure 3-top is the table that was added before a view of the model, and Figure 3-bottom is the table that was added after a view of the model. Notice in Figure 3-top that the parameters "&model_name" and "&scale" have not updated. They evaluate to MODEL NAME and DRAWING SCALE, respectively. In Figure 3-bottom, these two parameters have updated. This is because there was a model to reference to find the appropriate information. If a model is added after the format is added, add the format again by clicking **File > Page Setup >** in the **Page Setup** box select **Browse** and Browse to the format.



Modelcam	DRAWING NAME: &dwg_name	SCALE:
	PART NAME: &model_name	&scale
	SHEET ¤t_sheet OF &total_sheets	
	DRAWN BY: &drawn_by	MATERIAL: &mat

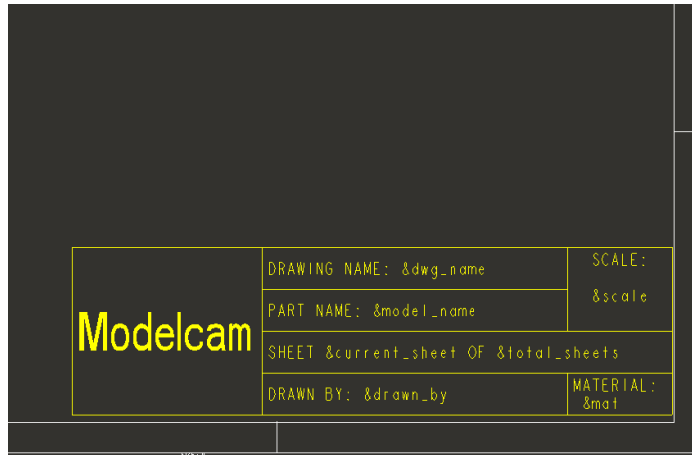


Modelcam	DRAWING NAME: DRW001	SCALE:
	PART NAME: CASTER	1.000
	SHEET 1 OF 1	
	DRAWN BY: Jef Engineer	MATERIAL: ALUMINUM

Although &today's_date is an internal Pro/ENGINEER parameter, it needs to be placed in a **Table** in order for it to be evaluated when the format is placed on a drawing. If &today's_date is placed as a free note on a format, the parameter will not be evaluated. The note will appear as "&today's_date".

In order for a user defined parameter to update with information from the model, the parameter must be placed inside a **Table**. Placing the parameter inside a **Table** is a cue for Pro/ENGINEER to search the current model for a parameter of the appropriate name. If the parameter is not placed inside a **Table**, the parameter will not update with information from the model, but will be treated as a regular note. However, if a parameter name is entered into a **Table**, and this parameter does not exist in the model, Pro/ENGINEER will prompt to "Enter text for the parameter "parameter name" [NONE]:". This is a good method of having Pro/ENGINEER prompt for a value, such as "&drawn_by", when a format is placed on a drawing. The configuration option "make_parameters_from_fmt_tables" is available to facilitate the use of user defined parameters. When "make_parameters_from_fmt_tables" is set to "yes", Pro/ENGINEER will prompt for a parameter type before the prompt "Enter text for the parameter "parameter name" [NONE]:". This will save the value of the user defined parameter such that the value will be used when the format is placed on additional sheets of the drawing.

As seen in Figure 4, the user defined parameters "&mat" and "&drawn_by" have been placed inside of the **Table** on the format.



Modelcam	DRAWING NAME: &dwg_name	SCALE:
	PART NAME: &model_name	&scale
	SHEET ¤t_sheet OF &total_sheets	
	DRAWN BY: &drawn_by	MATERIAL: &mat